

Frypot Clip Installation

The enclosed clips (910-2474) are used to attach one frypot to another, sealing the gap at rear of 50/52-series fryers. The clips are installed just above the joiner strip. See the illustrations below when placing the clips after the installation of a service frypot.

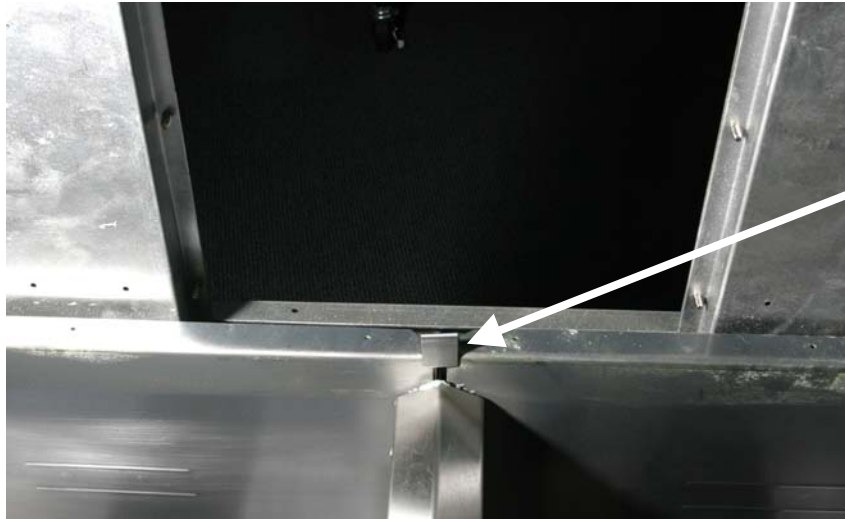


Figure 1: The clip is shown loosely in place at the rear of the frypot above. It is shown tapped into its final position in figure 2 at right.

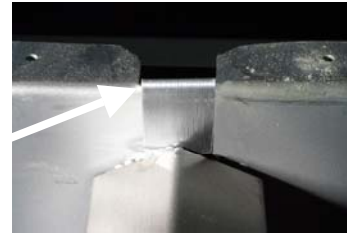


Figure 2